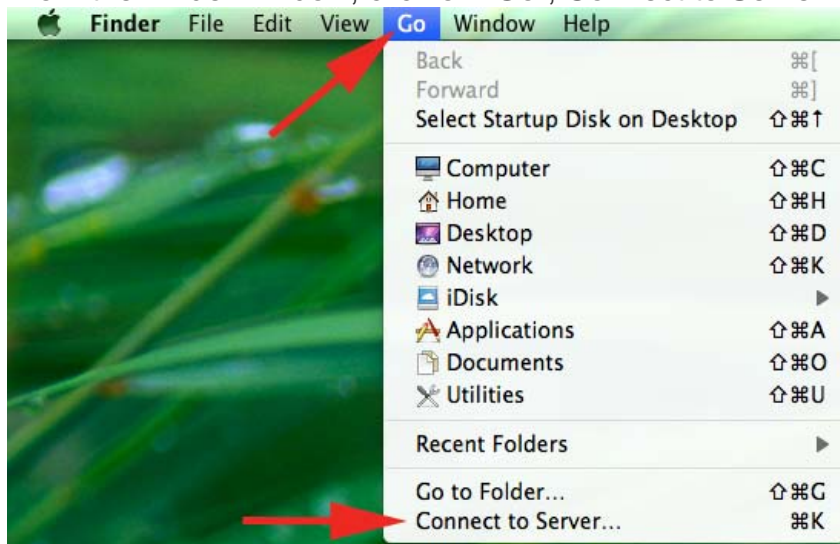


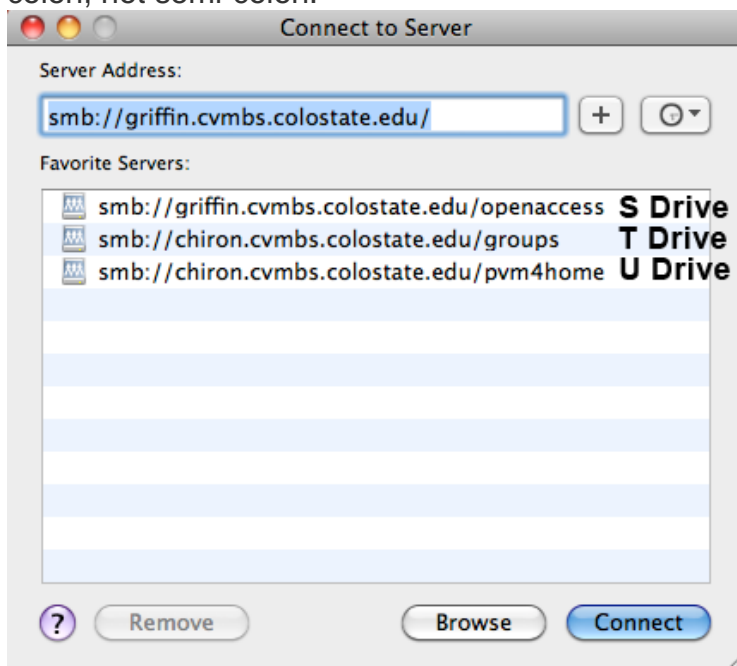
To get access to the CVMBS networked drives from your personal computer you will need to be connected to the CSU VPN via CSU-Net or Junos Pulse.

Macintosh OSX

1. From the Finder window, click on “Go”, Connect to Server.



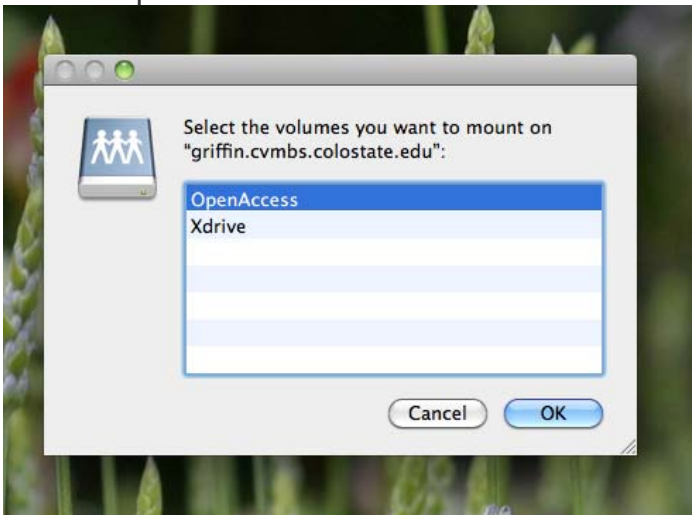
2. These are the addresses you will need to put into the “Server Address” box, clicking the “+” sign to add them to the “Favorite Servers” box. Be sure to use a colon, not semi-colon.



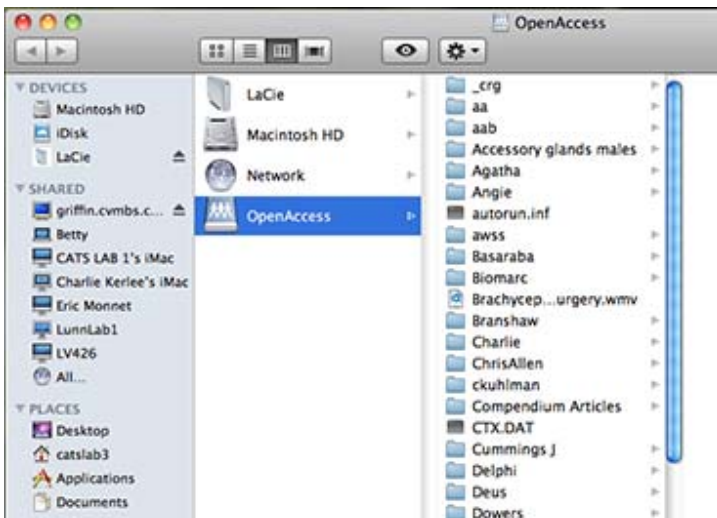
- Click "Connect" and you will see the following dialog box. Select "Registered User" and enter your eID credentials. Note: you will need to add "colostate\" before your eID.



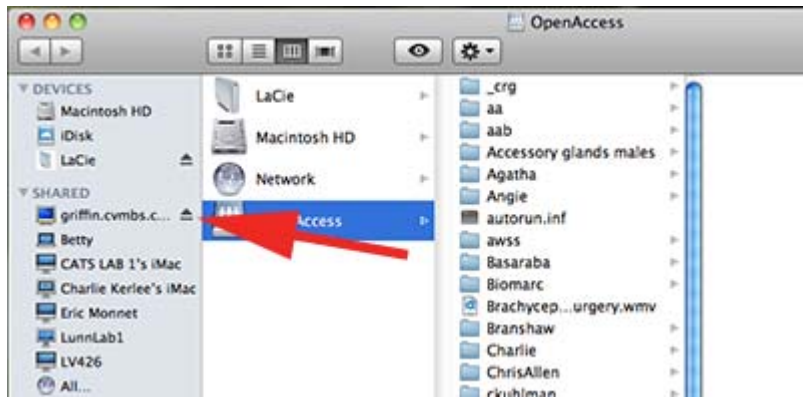
- Select "OpenAccess" and click "OK".



- Now you can see the network folders (volumes). It is possible to work of the volumes, however it is often safer to copy files to your computer and work on them from there.



6. To disconnect from the volumes click on the “Eject” button.



If you have questions or concerns, please contact the CVMBS IT Services Help Desk:

Call: 297-HELP (4357)

Email: CVMBSComputerHelp@Colostate.Edu

Visit us on Main Campus: 1st Floor Lake Street Parking Garage

Visit us at the VTH: Room A222

Visit us at the Foothills Campus: D166 Research Innovation Center (RIC)