

Click [here](#) if you are having trouble viewing this message.



**COLORADO STATE
UNIVERSITY**

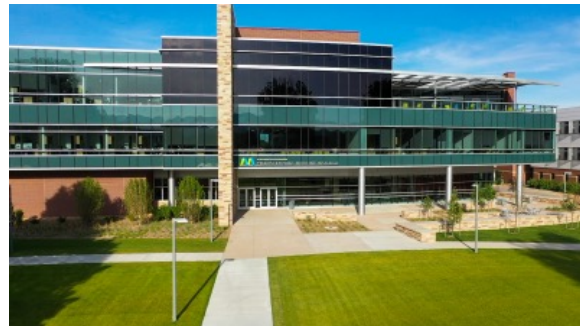


**C. WAYNE MCILWRAITH
TRANSLATIONAL MEDICINE INSTITUTE**

TMI News

Welcome to the spring edition of TMI News! Since our inaugural edition of this newsletter in November 2020, we have continued to increase capacity within the TMI facility for our cutting-edge research, delivery of highly specialized continuing education courses, and commercialization work in order to make an impact to human and animal health.

Working within the framework of COVID-19 pandemic guidelines issued by local, state, and federal agencies, TMI research activities have recently moved from 50% to 100% capacity. This means our TMI investigators can now reinstate projects that had been put on hold over the past year, as well as start new projects that had been waiting in the wings.



The C. Wayne McIlwraith Translational Medicine Institute at Colorado State University.

Previously awarded TMI Tap grants are now starting to ramp up, and the imaging center is busier than ever. In addition to on-site research, investigators and students are coming together for an NIH grant writing workshop organized and facilitated by our Associate Director of Research, to hone their skills in the grant writing process for continued success in research funding for the future. Continuing education began offering in-person courses last fall and have continued to fill seats and add additional course options to the 2021 calendar. The courses cover a wide variety of subjects and skills, and partnerships with sponsors are expanding, which will allow us to offer even more diverse courses in the future.

The TMI team, which includes faculty, staff, graduate students, and student employees, have done a tremendous job keeping us moving forward in a very challenging environment and we now can see the light at the end of the tunnel. We have also been making some good progress in the search for a new director and we will hopefully have some exciting news to share in

our next newsletter or even sooner. Overall, we are very excited for the future and are ready to get back to our 100% commitment to delivering on our research, education and commercialization goals.

I hope you all have a wonderful spring and summer and please enjoy the stories and information below on some of our key activities.

Brett Anderson
Interim Director
C. Wayne McIlwraith Translational Medicine Institute
Colorado State University



CSU VETERINARY HEALTH SYSTEM

The CSU Veterinary Health System aims to transform several service units into a comprehensive veterinary medical center governed by responsible management that supports our units' individual missions.

[Learn more...](#)

EQUINE HOSPITAL UPDATE

The team is over halfway through construction of the Johnson Family Equine Hospital. All walls are up and crews are finishing sealing the building to start heating for interior finishes. The facility is expected to reach the level of substantial completion by July 2021. The facility should be fully operational to serve clients and animals by September.





View a time-lapse video that shows construction progression over the past 10 months.

[Learn more...](#)

INSIDE THE INSTITUTE

The Translational Medicine Institute comprises three areas of focus: research, education, and commercialization. The people of the TMI include veterinarians, physicians, clinicians, researchers, engineers, educators, administrators, and industry partners, all working toward innovation in animal and human health.

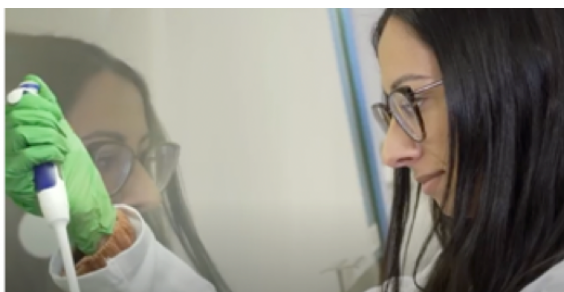
Dr. Laurie Goodrich named ORC Director

[Read article...](#)

Collaboration between the Center for Companion Animal Studies and Boehringer-Ingelheim Animal Health

[Read article...](#)

TMI RESEARCH

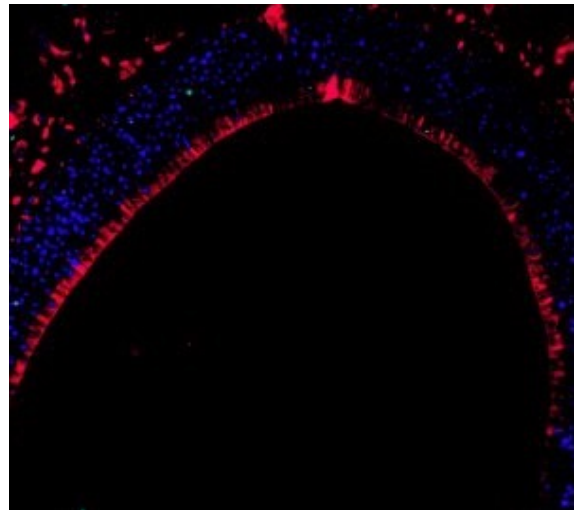


The TMI Research team comprises six groups working in an integrated fashion, applying advanced capabilities, clinical discovery, and cross-functional/cross-institutional collaborations to address problems and work toward solutions. Read more about these groups of research professionals below.

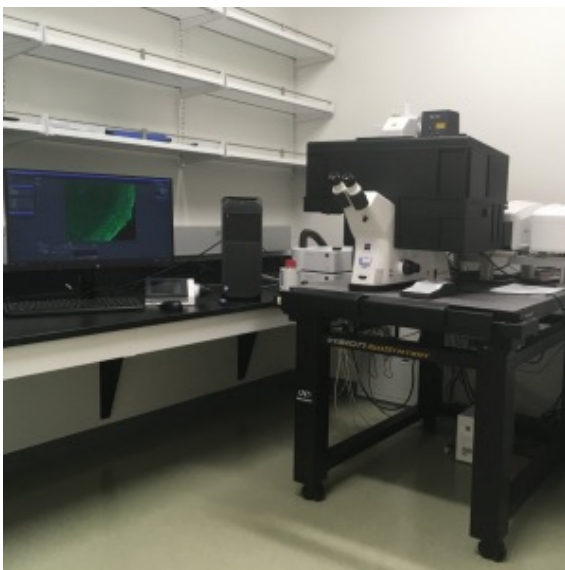




Pidcock Beats Cancer, Leads Key Pandemic Response Programs



COVID Nasal Spray Immunotherapy for Boosting Vaccine Responses



Confocal Microscope Comes to the TMI



Improving Articular Cartilage Imaging for Early Joint Disease Detection





Wave Good Bye to Back Pain: Pulsed Electromagnetic Field Therapy as a Novel Approach to Rehabilitation



TMI Research Spotlight:
[Center for Immune and Regenerative Medicine](#)



Partnership:
[TMI, PSRL, Sparta Biopharma, and Rush Collaboration](#)





Conversations with Dr. Simon Turner, Part I

TMI EDUCATION

Elevating Continuing Education

Colorado State University offers the full array of veterinary continuing education courses at the C. Wayne McIlwraith Translational Medicine Institute, hosting a multitude of both online, in-person lecture, and laboratory-based courses year round.

Our CE team has worked to create and implement new guidelines in order safely facilitate in-person on-site laboratory learning at the TMI.

Learn about the changes Dr. Ross Palmer, CE Director has implemented. [Watch the video...](#)



TMI COMMERCIALIZATION



TMI commercialization goals aim to accelerate research and product development in an effort to launch novel solutions to market and attract industry partners. [Read more](#) about product development initiatives and commercialization at the TMI.

In Memoriam

[Dr. Vaughn Cook](#)

[Dr. Dave Hanlon](#)

[Dr. Bill W. Pickett](#)

CSU NEWS



[How to Build a City that Prioritizes Public Health](#)



[Radiation Therapy Offers Cancer Treatment Option for Ferrets, Birds, other Small Pets](#)



[Researchers Work to Develop Vaccine for Future Pandemics](#)

Stay Connected with the TMI

We are proud of the recognition our students, faculty, and researchers have earned by making an impact with their leading-edge and groundbreaking work. Stay connected with the latest news on the College of Veterinary Medicine and Biomedical Sciences [Source](#) for news.

STAY CONNECTED



C. Wayne McIlwraith Translational Medicine Institute
College of Veterinary Medicine and Biomedical Sciences
Colorado State University
2350 Gillette Drive
Fort Collins, Colorado 80523

You are receiving this message because of your affiliation with or support of Colorado State University. If you would like to be removed from this mailing list, you may [unsubscribe online](#).