

# MASTER OF SCIENCE IN BIOMEDICAL SCIENCES (1-YEAR)

**HUMAN ANATOMY, ANIMAL ANATOMY, AND  
NEUROBIOLOGY**



COLLEGE OF VETERINARY MEDICINE  
AND BIOMEDICAL SCIENCES  
COLORADO STATE UNIVERSITY



## WHO DOES THIS PROGRAM BEST SERVE?

- STUDENTS LOOKING TO GO TO:
  - Professional schools
  - Work in industry
  - PhD programs
  - Teach
- IMPROVE SCIENCE GPA
- MATURE ACADEMICALLY BEFORE GOING ON TO PROFESSIONAL SCHOOL
- CHANGE CAREERS ( ONLY IF YOU HAVE SOLID SCIENCE BACKGROUNDS)



# NEW FACILITIES –BUILT 2019





# NEW FACILITIES

- **GRADUATE LOUNGE**
  - Lockers for each student
  - Kitchen
  - Computers and printer access
  - Study Space
- **COMPUTER LAB**
- **VIRTUAL REALITY LAB**
- **GROSS ANATOMY LAB**
- **NEUROANATOMY LAB**





# SOME GENERAL FACTS ABOUT THE PROGRAM:



- 3 Concentrations: Human Anatomy, Animal Anatomy, Neurobiology
- Course based program: Cumulative comprehensive exams in May rather than a capstone project
- You will receive your diploma in August
- Program consists of 32 credits total- approx. 16 credits each semester ( all electives must be at least 300 level or above).
- Cohort consists of 50-55 students
- Personalized advising as well as full access to career center and pre-health advising



# CONCENTRATION OVERVIEWS

## Human/Animal Anatomy Core Courses

- Mammalian Physiology 1
- Mammalian Physiology 2
- Neuroanatomy
- Human/Animal Gross Anatomy Dissection
- Advanced Anatomy/Case Based Studies
- Managing a Career in Science

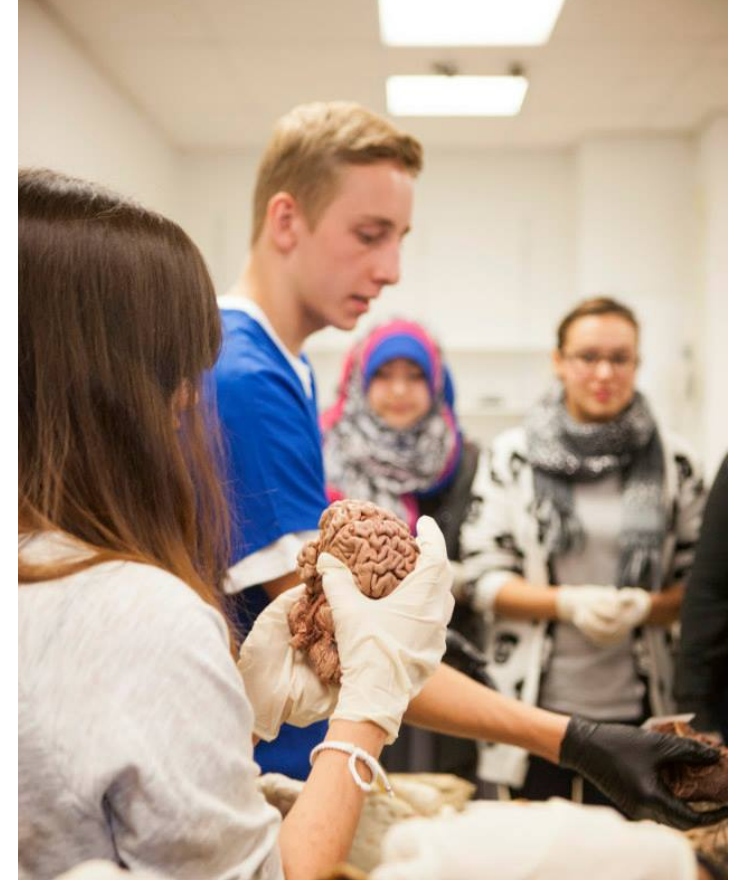




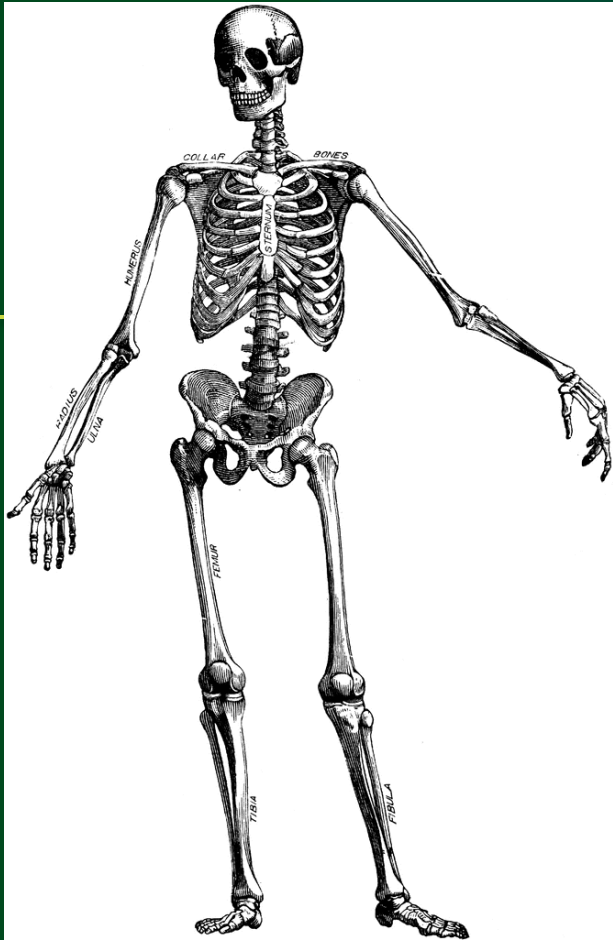
# CONCENTRATION OVERVIEWS

## Neurobiology

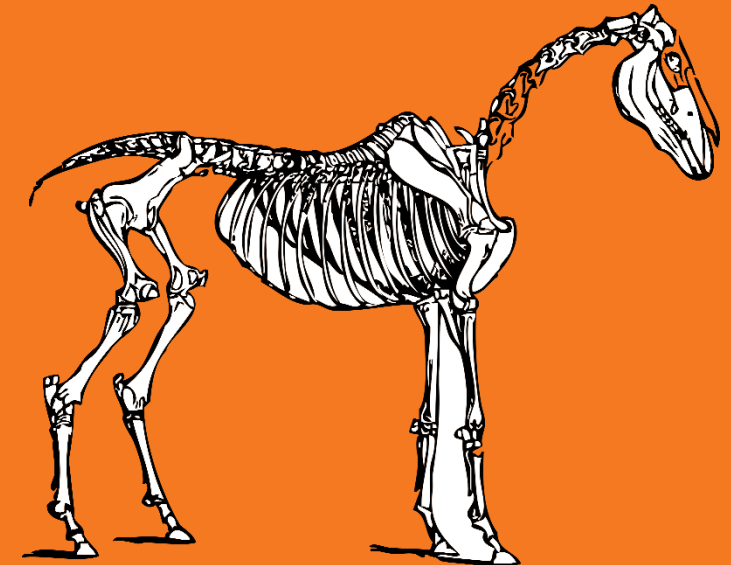
- Mammalian Physiology 1
- Neuroanatomy
- Managing a Career in Science
- Developmental Neurobiology
- Neuronal Circuits, Systems, and Behavior



# POPULAR ELECTIVES



- PHARMACOLOGY
- ENDOCRINOLOGY
- IMMUNOLOGY
- CARDIOPULMONARY PHYSIOLOGY
- ABNORMAL PSYCHOLOGY
- BIOETHICS
- HUMAN AND ANIMAL DISEASE
- FIELD NECROPSY
- BIOCHEMISTRY
- SCIENCE AND ETHICS
- TOXICOLOGY
- MOLECULAR GENETICS
- ANIMAL METABOLISM





# THE APPLICATION PROCESS

DEADLINE: APRIL 1 OR EARLY DECISION: DECEMBER 1



Online application materials include:

1. Letters of Recommendation
2. Personal Statement
3. transcripts from all attended colleges and universities
4. official test scores
5. video online assessment
6. timed written response
7. resume

- You will be contacted by the first week of June (at the latest) regarding admission decision.



COLLEGE OF VETERINARY MEDICINE  
AND BIOMEDICAL SCIENCES  
COLORADO STATE UNIVERSITY

# FALL 2020 APPLICATIONS- POSTBAC CAS

- WE WILL BE SWITCHING OVER TO THE “CAS” SYSTEM- CENTRAL APPLICATION SYSTEM
- POSTBACCAS ALLOWS APPLICANTS TO USE A SINGLE ONLINE APPLICATION AND ONE SET OF MATERIALS TO APPLY TO MULTIPLE POST-BACCALAUREATE PROGRAMS AT PARTICIPATING SCHOOLS.
  - <http://postbaccas.liaisoncas.org/students/>
- PLEASE SEE OUR WEBSITE/POST BAC CAS WEBSITE FOR MORE DETAILS!



# PERSONAL STATEMENT

Professional writing, no gimmicks, no creative writing

Your personal statement should answer the following questions in no more than 2 pages (double spaced):

- What strengths and personal attributes will you bring to the cohort?
- What do you hope to get out of this program?



# LETTERS OF RECOMMENDATION



- If you have a weaker gpa, try to have 2 academic and one personal evaluation.
- Clinicians write the weakest letters!
- Find 3 people who can answer the question “are you going to be a successful graduate student?”



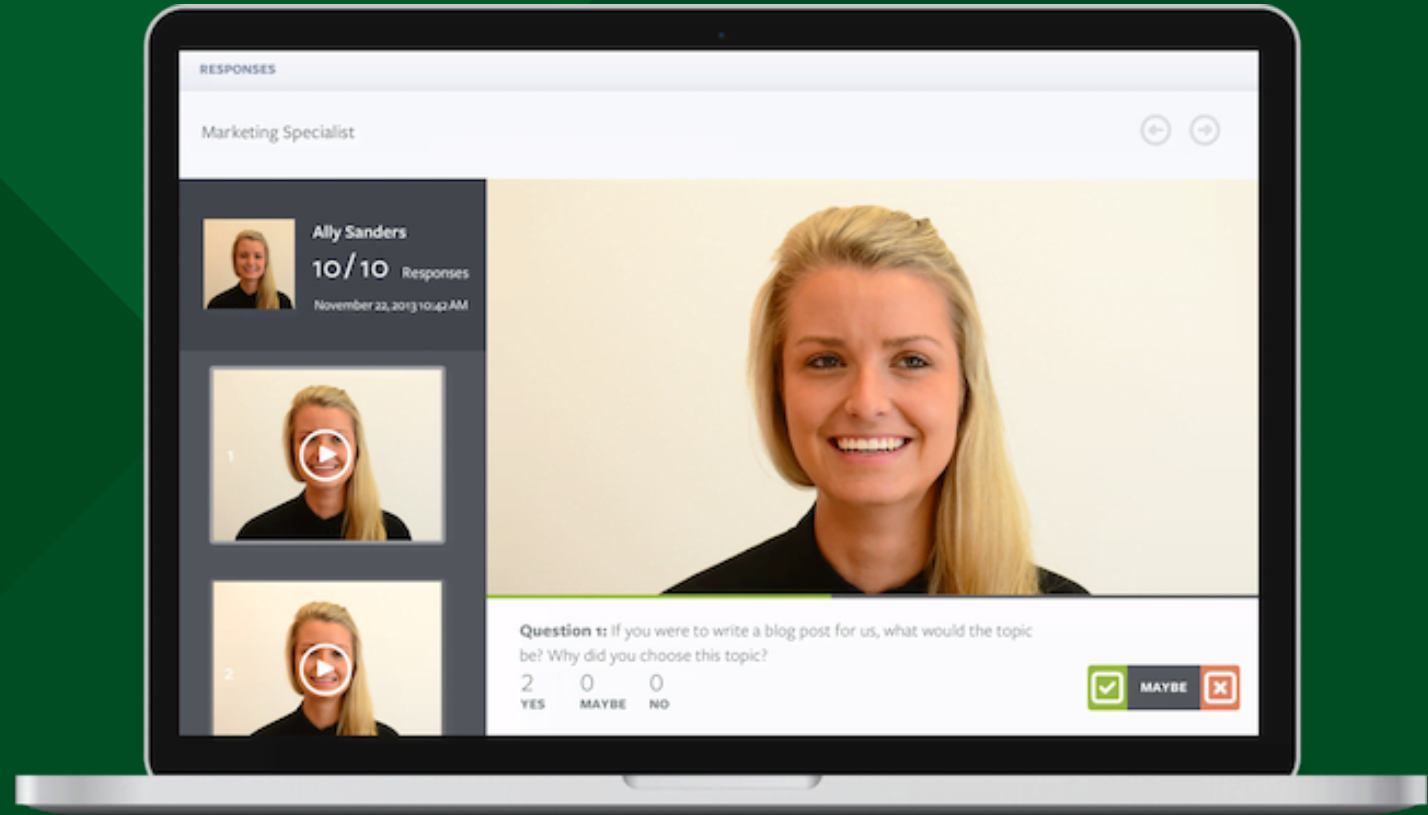
# TEST SCORES- WILL BE OPTIONAL FOR 2020 CYCLE

- WE ACCEPT GRE, MCAT, AND DAT
- SCORES NEED TO ARRIVE ON TIME FOR YOUR APPLICATION TO BE COMPLETE.
- SCORES THAT ARRIVE AFTER THE DEADLINE WILL HOLD UP YOUR APPLICATION
- GRE- 300 COMBINED OR BETTER, 500 MCAT- OR BETTER



# VIDEO /TIMED WRITTEN RESPONSE

- YOU WILL BE SENT A LINK WITH INSTRUCTIONS
- YOU NEED A COMPUTER WITH CAMERA AND AUDIO CAPABILITIES
- RECORD YOURSELF ANSWERING PROMPTS
- YOU WILL BE GIVEN A PRACTICE RUN BEFORE YOU HAVE TO SUBMIT
- THEY HAVE 24 HOUR TECH SUPPORT IF YOU HAVE ANY ISSUES WITH YOUR VIDEO



# STUDENTS WITH GPAS BELOW 3.0

- Address your academic blemishes on the supplemental application. Don't pretend they aren't there!
- Things the admission committee wants to know are:
  - What have you done to remedy your GPA?
  - Have you taken classes over or extra classes to help show the admissions committee that you are capable of graduate level work?
  - Do your evaluation forms discuss your academic capabilities even though your transcript doesn't reflect that?
- Get 2 academic evaluations if possible
- Do you have outstanding test scores?
- Fill out the low GPA statement!



# COST, FUNDING, FINANCIAL AID

- In-state tuition ~ \$18,000
- Out of state tuition ~\$40,000
- You can apply for financial aid when you apply to our program (despite what the graduate school or financial services websites say,), but with financial aid, the earlier you apply the better.
- This is a self-funded program. Because of this we do not offer any scholarships or assistantships.
- Most students do not work while in the program. Some who do work usually only work 10-15 hours at the most. Our program is very time and labor intensive and we do not recommend a busy work schedule.

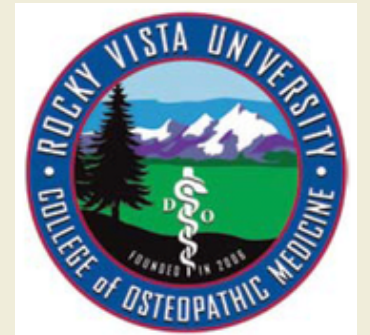
# LINK WITH ROCKY VISTA UNIVERSITY COLLEGE OF OSTEOPATHIC MEDICINE



- We have a collaboration with Rocky Vista School of Osteopathic Medicine.
- They hold up to 6 spots for graduates of our Human Anatomy program.
- If you would like to be considered, you must still submit an application to Rocky Vista.



COLLEGE OF VETERINARY MEDICINE  
AND BIOMEDICAL SCIENCES  
COLORADO STATE UNIVERSITY

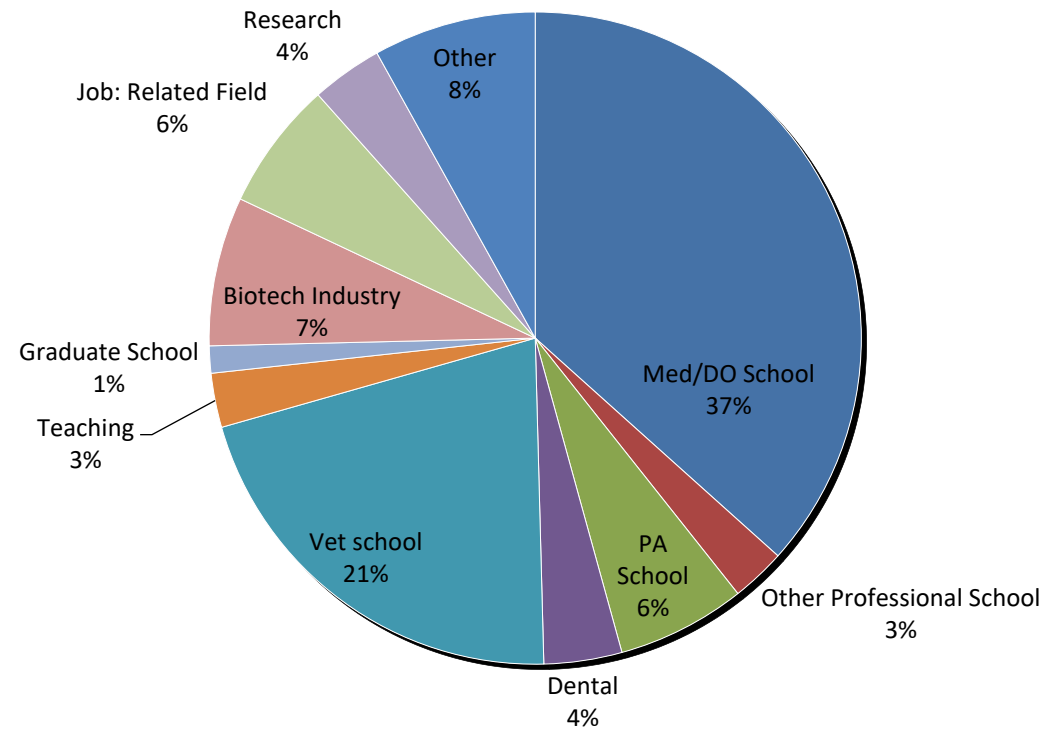


# CURRENT CLASS PROFILE

<b>Total Number of completed Applications ( old application system)</b>	<b>134</b>
<b>Number Enrolled</b>	<b>54</b>
<b>Average GPA</b>	<b>3.37</b>
<b>Age Range</b>	<b>20-40</b>
<b>Average Test Scores</b>	MCAT: 500 GRE: 305 DAT:18
<b>Residents vs Non-Residents</b>	61% Residents: 39% Non-Residents

# TYPICAL CAREER OUTCOMES

**Student Outcomes 2007-2018**





# QUESTIONS? COMMENTS? CONCERNS?

Contact us at [bmsgradinformation@colostate.edu](mailto:bmsgradinformation@colostate.edu)



COLLEGE OF VETERINARY MEDICINE  
AND BIOMEDICAL SCIENCES  
COLORADO STATE UNIVERSITY

MASTER OF SCIENCE IN  
BIOMEDICAL SCIENCES (1-YEAR)  
**ASSISTED REPRODUCTIVE TECHNOLOGIES**



# OVERVIEW

- 1 Year, Non-Thesis Masters Degree
- Cohort of 24 students per year
- Alums work in Human and Animal reproduction fields
- 30 credits (15 per semester)
- Comprehensive Exam
- Internship





## FALL:

Research Techniques for  
Gametes and Embryos  
Reproductive Physiology and  
Endocrinology  
Assisted Reproductive  
Technology Lab

## SPRING:

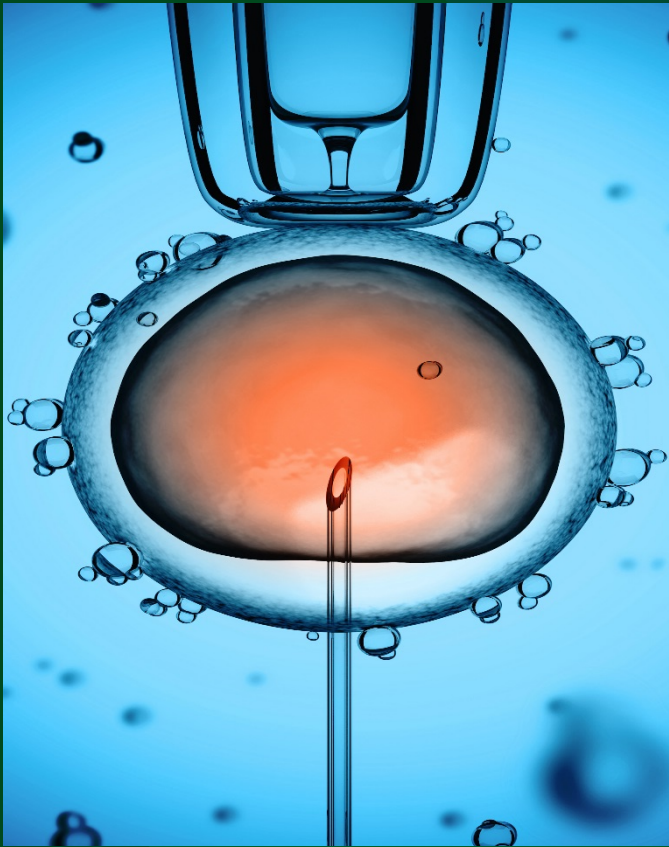
Mammalian Physiology  
Comparative Reproductive  
Physiology  
Assisted Reproductive  
Technology Lab

## SUMMER

6 week Internship



# POPULAR ELECTIVES



- Andrology
- Bovine Reproduction Management
- Animal Metabolism
- Principles of Biochemistry
- Endocrinology
- Human Heredity and Birth Defects
- Conservation Biology
- Medical Bacteriology
- Molecular Regulation of Cell Function
- Biosafety in Research Laboratories
- Principles and Mechanisms in Disease
- Research Policy and Regulation
- Topics in Microbiology
- STEM Communication

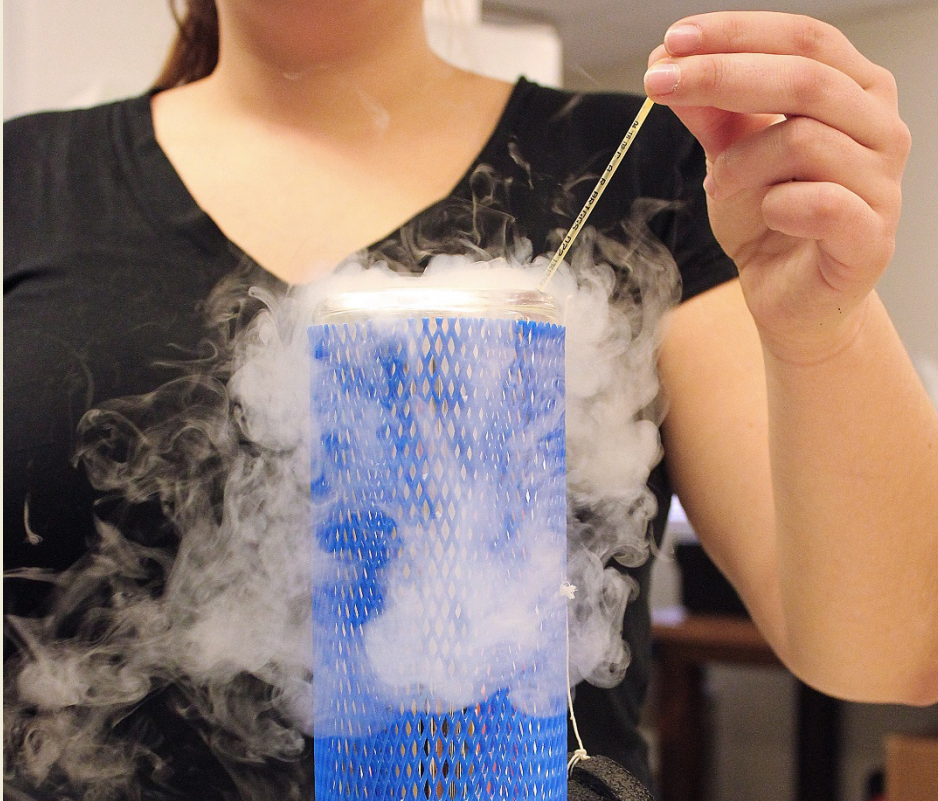


# INTERNSHIP

- 6 weeks at location
- Field work experience
- 99% of students in program get offered a job at their internship placement
- Evaluation from your proctor



# HOW TO APPLY

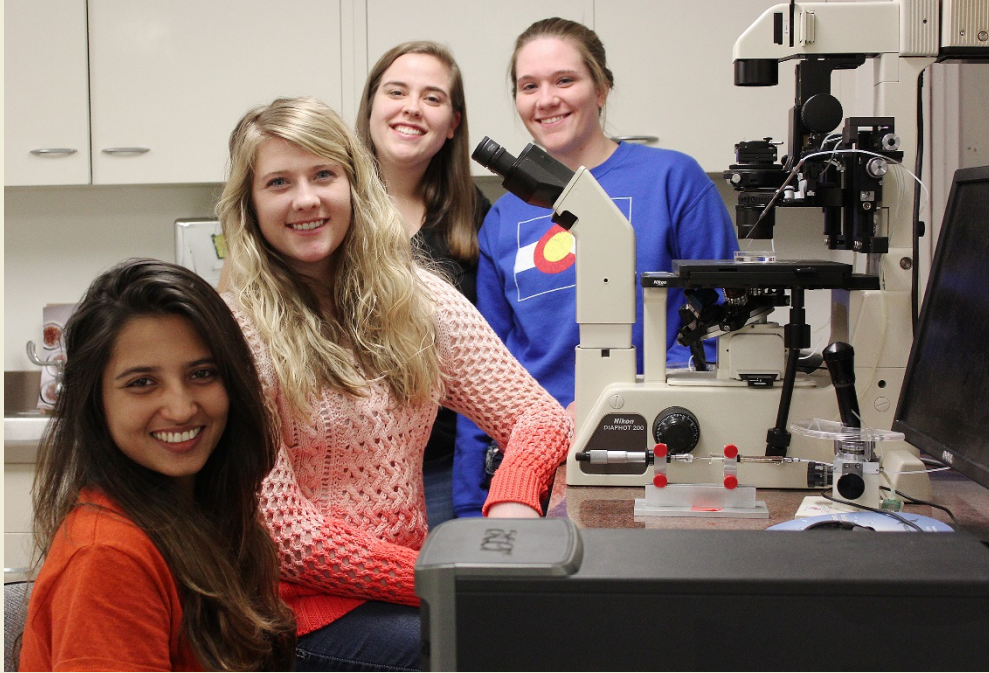


- Application Deadline is April 1<sup>st</sup>
  - Soft deadline– admissions becomes rolling after April 1<sup>st</sup> until class is filled
- Application Materials
  - Online Application
  - Personal Statement
  - 3 letters of Rec
  - GRE/MCAT scores
  - Resume





# MORE IMPORTANT INFORMATION



- Strong applicants have a robust science background, classes in reproductive biology and physiology
- Strong interest in reproductive technologies
- Lots of job opportunities



COLLEGE OF VETERINARY MEDICINE  
AND BIOMEDICAL SCIENCES  
COLORADO STATE UNIVERSITY



# CURRENT CLASS PROFILE MSB-ART

<b>Total Number of completed Applications</b>	42
<b>Number Enrolled</b>	24
<b>Average GPA</b>	3.4
<b>Average Age</b>	22
<b>Age Range</b>	22-26
<b>Average Test Scores</b>	MCAT:509 GRE: 300
<b>Residents vs Non-Residents</b>	38% Residents: 62% Non-Residents

# 2013-2017 TOTAL STUDENT OUTCOMES

